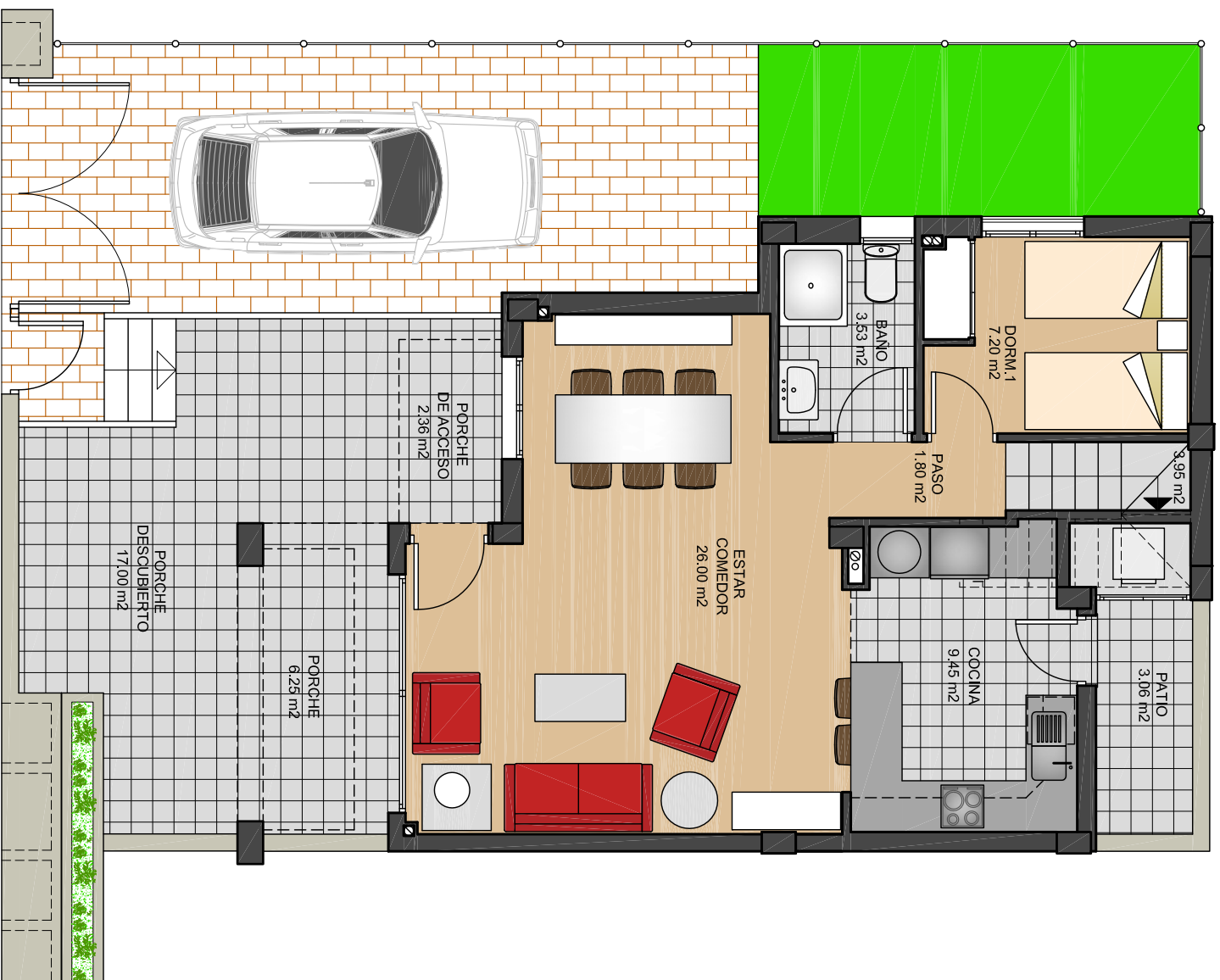


SUPERFICIE UTIL
VIVIENDA _____ 84.73 m²
50% PORCHE _____ 4.30 m²
TOTAL _____ 89.03 m²

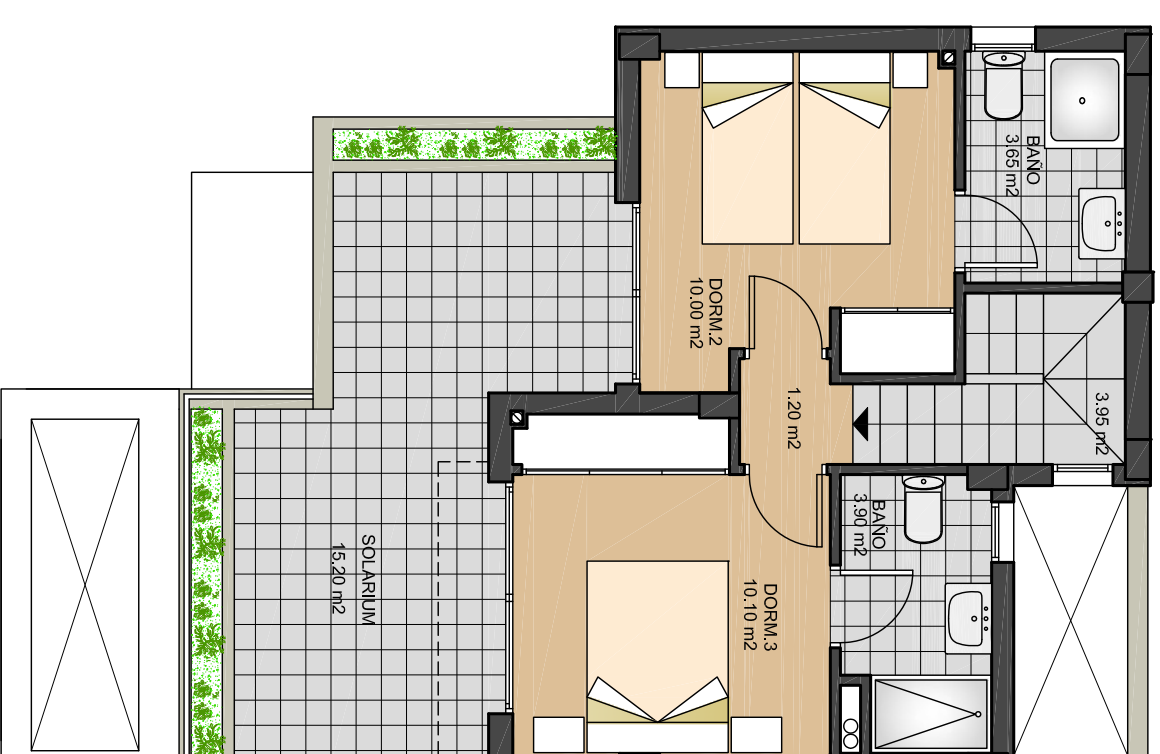
SUPERFICIE CONSTRUIDA
PLANTA BAJA _____ 58.80 m²
50% PORCHE _____ 1.18 m²
PLANTA PISO _____ 37.52 m²
TOTAL _____ 97.50 m²

VIVIENDAS
44 - 48 - 52

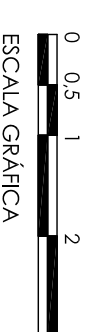
BREEZES
TORREVIEJA



PLANTA BAJA



PLANTA PISO



ESCALA GRÁFICA