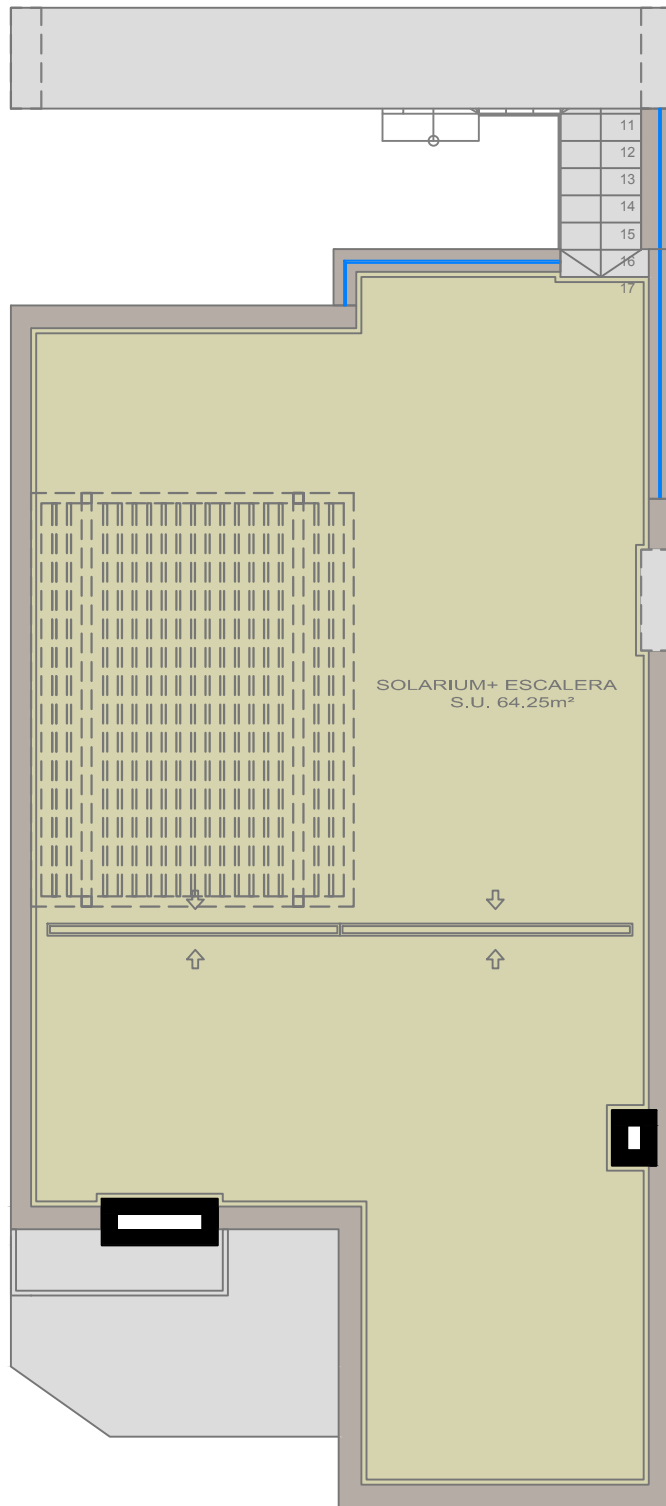
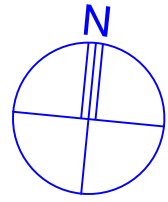


RESIDENCIAL "LA LUNA" - FASE III



PLANTA CUBIERTA



<u>SUPERFICIE CONSTRUIDA:</u>	
PLANTA BAJA, ESQUINA N°44:	
VIVIENDA:	71,65 m ²
TERRAZA DESC:	11,55 m ²
COMÚN:	3,20 m ²
TOTAL:	<u>86,40 m²</u>